

PUBLIC NOTICE

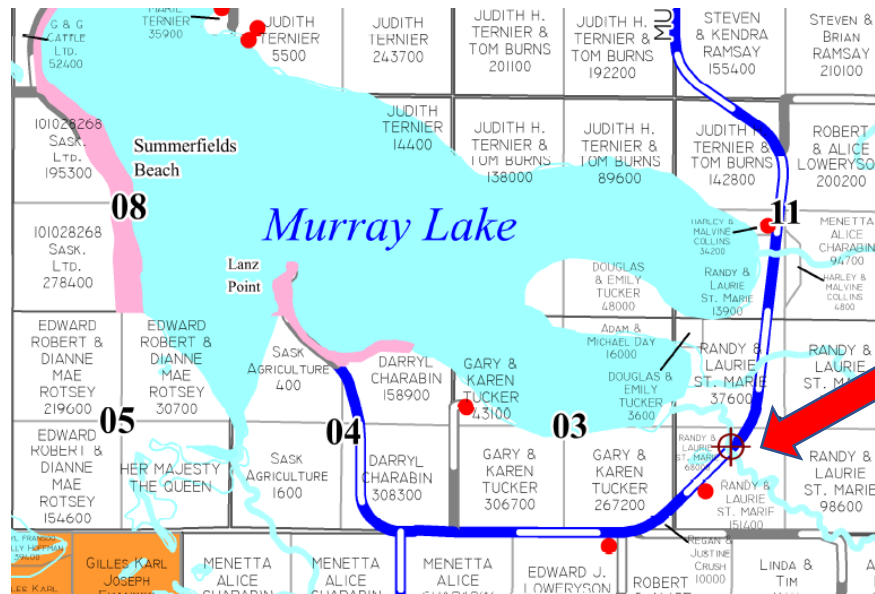


Bridge Restriction: Murray Lake Road

The bridge over the Lost Horse Creek on the Murray Lake Road is restricted to Secondary Weights Effective November 15th 2022.

The 2022 bridge inspection identified required repairs to various bridge components. The RM of Meota is currently working with a contractor to make the necessary repairs required to lift the restriction and accommodate winter weights.

Further notice will be provided once repairs are complete.



November 15, 2022